

Cleburne Co., AL

SEE PHOTOS
www.cypruspartners.com

Reference # 523

More info at
205-936-2160
Agent: Tom Brickman

Land For Sale
29 acres
\$65,000

Exclusive Agent For Owner
CYPRUS
PARTNERS

- This property is located in north Cleburne County about 5 miles east of Piedmont, Alabama, and 16 miles southwest of Cedartown, GA
- This is a very private property. The property is at the dead-end of Co Rd 94 (the bridge over Terrapin Creek right here is out). Plus, the Talladega National Forest joins on two of the four sides and it shares about 1,900 feet of boundary line with the U S Forest Service. The property fronts on Co Rd 94 for about 600 feet east of the creek, and 250 feet west of the creek.
- The property has a great home site overlooking Terrapin Creek (east of the creek). Perfect for outdoor recreation and canoeing. Power (but not water) is available along Co Rd 94.
- The property has about 900 feet of frontage on [Terrapin Creek](#), widely-recognized as a fast-flowing, scenic river
- The land is generally mountainous. Elevation changes about 200 feet from the highest point to the lowest point along Terrapin Creek. But, there is some nice level land along Terrapin Creek (east of the creek) and Co Rd 94, perfect for a home site (see FEMA flood map at [CyprusPartners.com](#))
- The property is completely forested in mature timber
- Note that this 29-acre property is one of three pieces offered as part of a larger 581-acre parcel. See "Division Map" to see how all three contiguous tracts fit together
- Prospective buyers may view the property on their own (download the brochure that contains a map and aerial photo), or arrange for a guided tour with the listing agent, Tom Brickman, at 205-936-2160

All distances and acres are estimates and should be independently verified

Important Notice

Investment in rural land carries risk and this offering is made with conditions

This property is subject to prior sale, price change and withdrawal from the market without notice. Prospective buyers should understand and independently verify risk factors before making a purchase decision. Neither Cyprus Partners and our agents nor the property owner make any representation or warranty as to completeness or accuracy of maps and other information provided here. No representation or warranty is made about this property, express or implied, as to any above-ground or below-ground condition, boundary location, fitness for any particular use, fair market value, access, acres, zoning, mineral ownership, condition of title, or the effects on property use from the actions of any government agency.

Driving Instructions

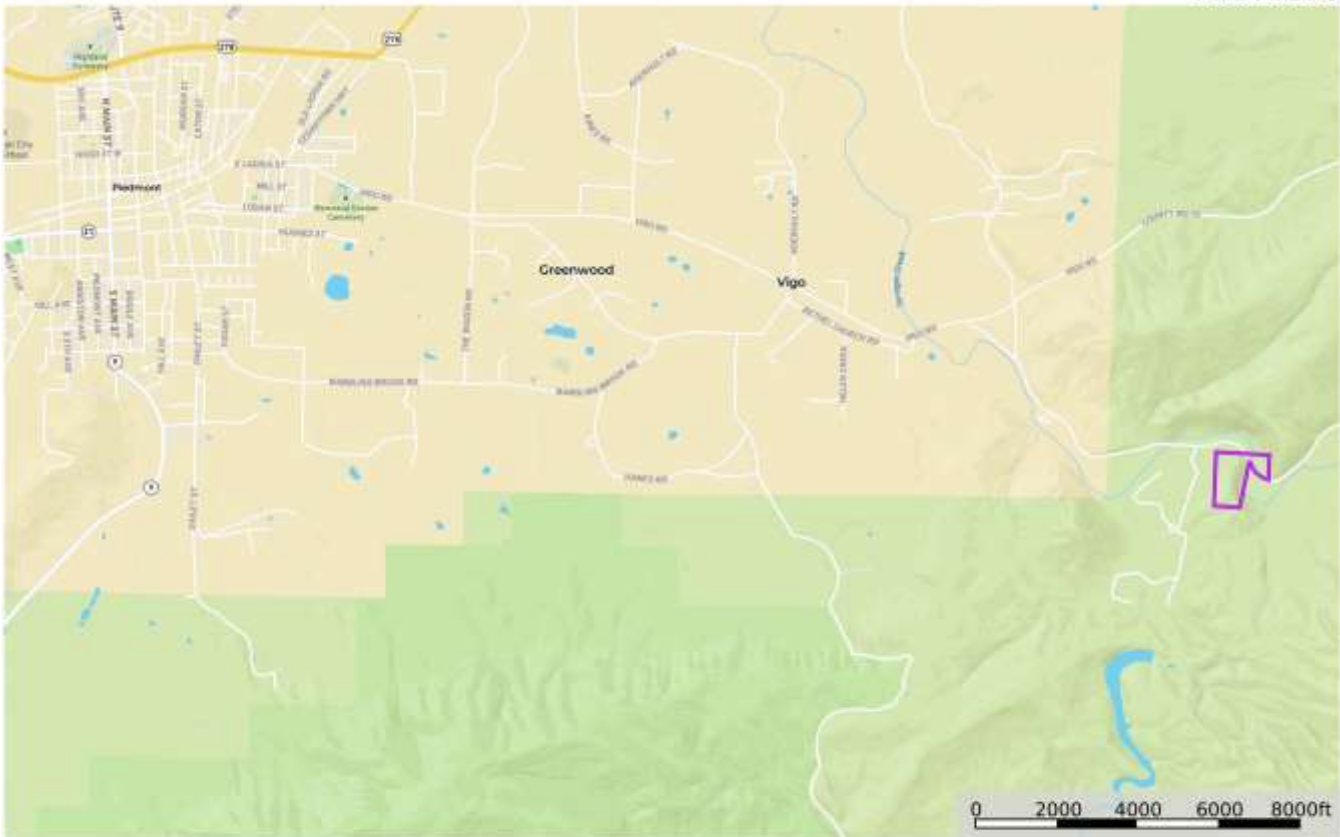
From the intersection of I-20 and U S Hwy 431 (I-20 Exit 191) half-way between Anniston and Heflin (42 minutes to the property)

From I-20 Exit 191, head north on U S Hwy 431 for 0.4 miles. Take a right on U S Hwy 78 and head east for 4.0 miles. Take a left and head north on AL Hwy 9 toward Piedmont for 21.4 miles. In Piedmont, take a right on E. Ladiga Street / Vigo Rd (the road is also called Cleburne Co Rd 70 once you cross the Cleburne County line) and go 6.6 miles. Take a right on Co Rd 94 and go 2.6 miles to the end of Co Rd 94 at the closed bridge. Look for the Cyprus Partners sign and the pink flagging. You are welcome to look on your own. We suggest you print out the brochure from our web site that has aerial photos and topo maps of the property, and take it with you. Or, call the agent, Tom Brickman, 205-936-2160, to arrange a visit or for more information.

Location Map

map_location_hunt29
Alabama, AC +/-

CYPRUS
PARTNERS



Boundary
line

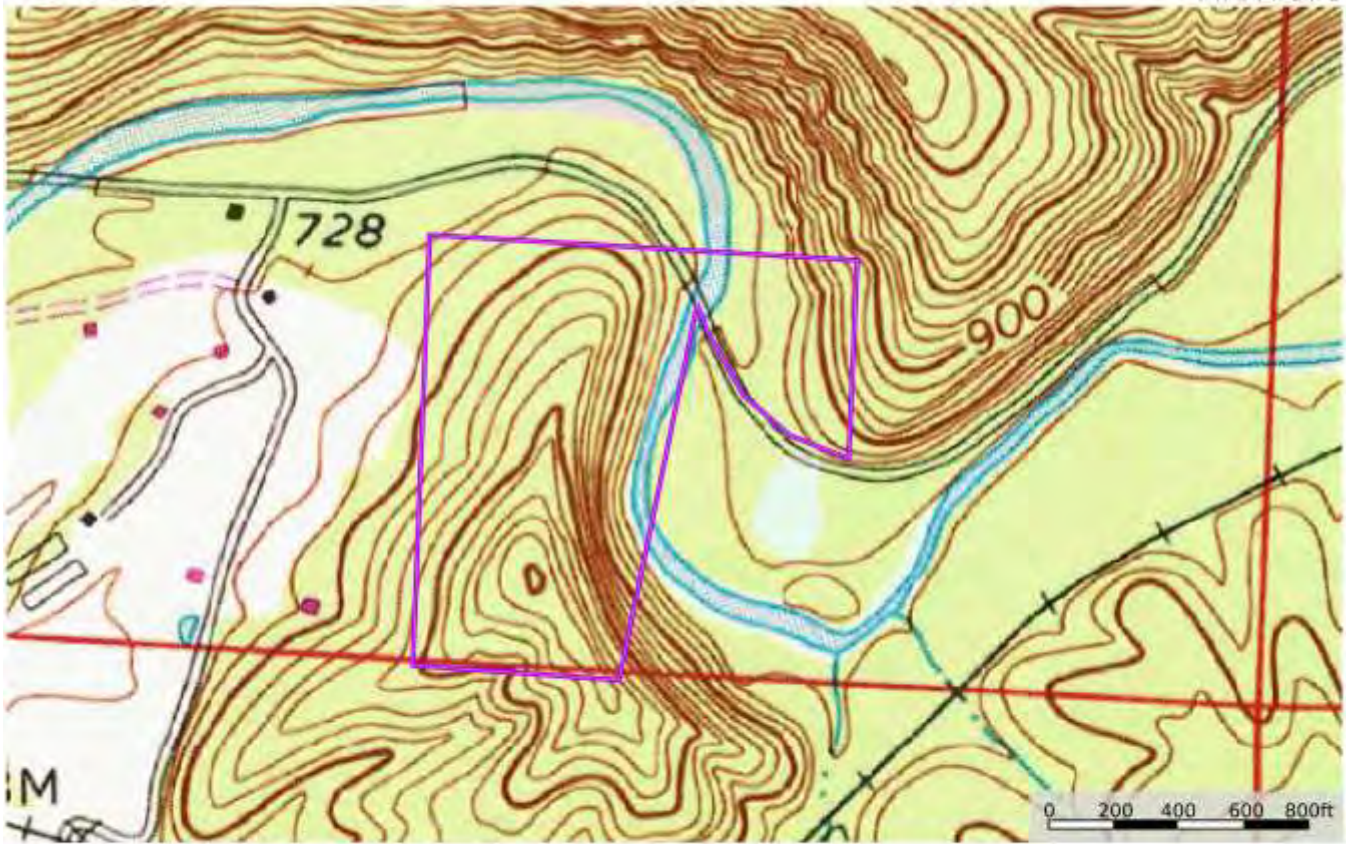
Tom Brickman
P: 205-936-2160 www.cyruspartners.com

id The information contained herein was obtained from sources deemed to be reliable. It is provided for informational purposes only and is not to be construed as a guarantee of accuracy or completeness.

Topographic Map

map_topo_hunt29
Alabama, AC +/-

CYPRUS
PARTNERS



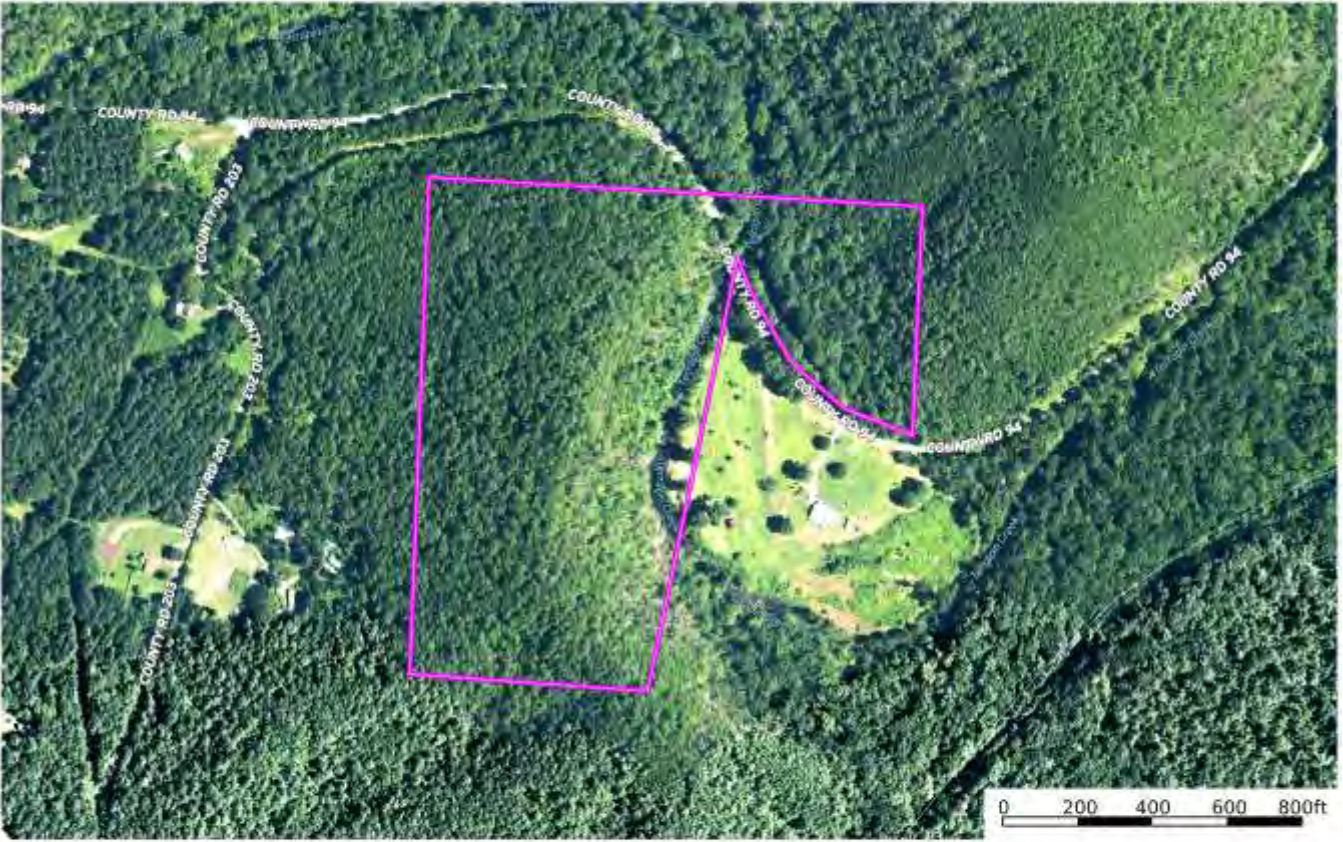
Tom Brickman
P: 205-936-2160 www.cyruspartners.com

id The information contained herein is not intended to be used for any purpose other than that for which it was prepared. It is not to be used for any other purpose without the express written consent of the preparer or its client.

Aerial Photo

map_aerial_hunt29
MADISON, NC 1:1

CYPRUS
PARTNERS



Boundary
Line

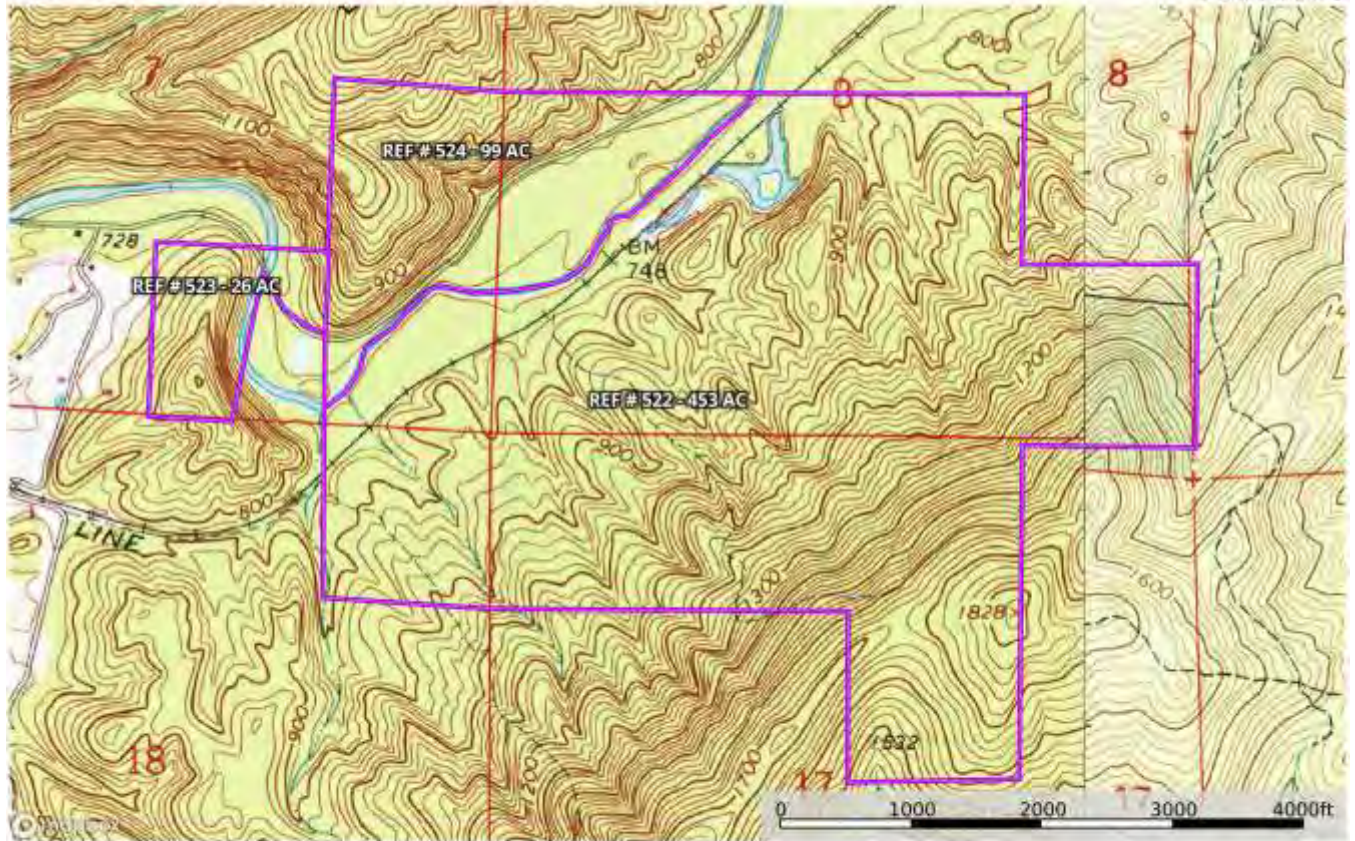
1:1000 Resolution
© 2018 IDI

id

Division Map

map_hunt division
Alabama, AC +/-

CYPRUS
PARTNERS



Toni Brickman
P: 205-626-2160 www.superspartnert.com

id The Information Database
The Information Database
The Information Database
The Information Database
The Information Database