

Chilton Co., AL

SEE PHOTOS
www.cypruspartners.com

Reference # 512

More info at
205-936-2160
Agent: Tom Brickman

Land For Sale

119 acres

\$232,050

Exclusive Agent For Owner

CYPRUS
PARTNERS

- Located in central Chilton County about 45 minutes south of Birmingham
- About 6.1 miles east of I-65 Exit 212 (The “peach” water tank)
- About 50 feet of frontage on a gravel county-maintained road (Co Rd 257)
- Power available about 900 feet west of the northwest corner. Water about 2,500 feet west of the northwest corner.
- Good hunting: property has about 3,200 feet on Mountain Creek and a good mix of pine and bottomland hardwood along the creek
- Excellent timber investment with about 92 acres of unthinned 23-year old planted pine
- Excellent fishing at two nearby Alabama Power impoundments. It is only about 22 minutes to Lake Mitchell Marina & Grill (learn more about Mitchell Lake [HERE](#)) and about 9 minutes to a public boat launch on Lay Lake (learn more about Lay Lake [HERE](#))
- Access to the interior of the property is on foot from Co Rd 257.

All distances, acres & boundary line flagging are estimates and should be independently verified

Driving Instructions

From I-65 Exit 212 at Clanton – the “peach” water tank exit (12 minutes to the property)

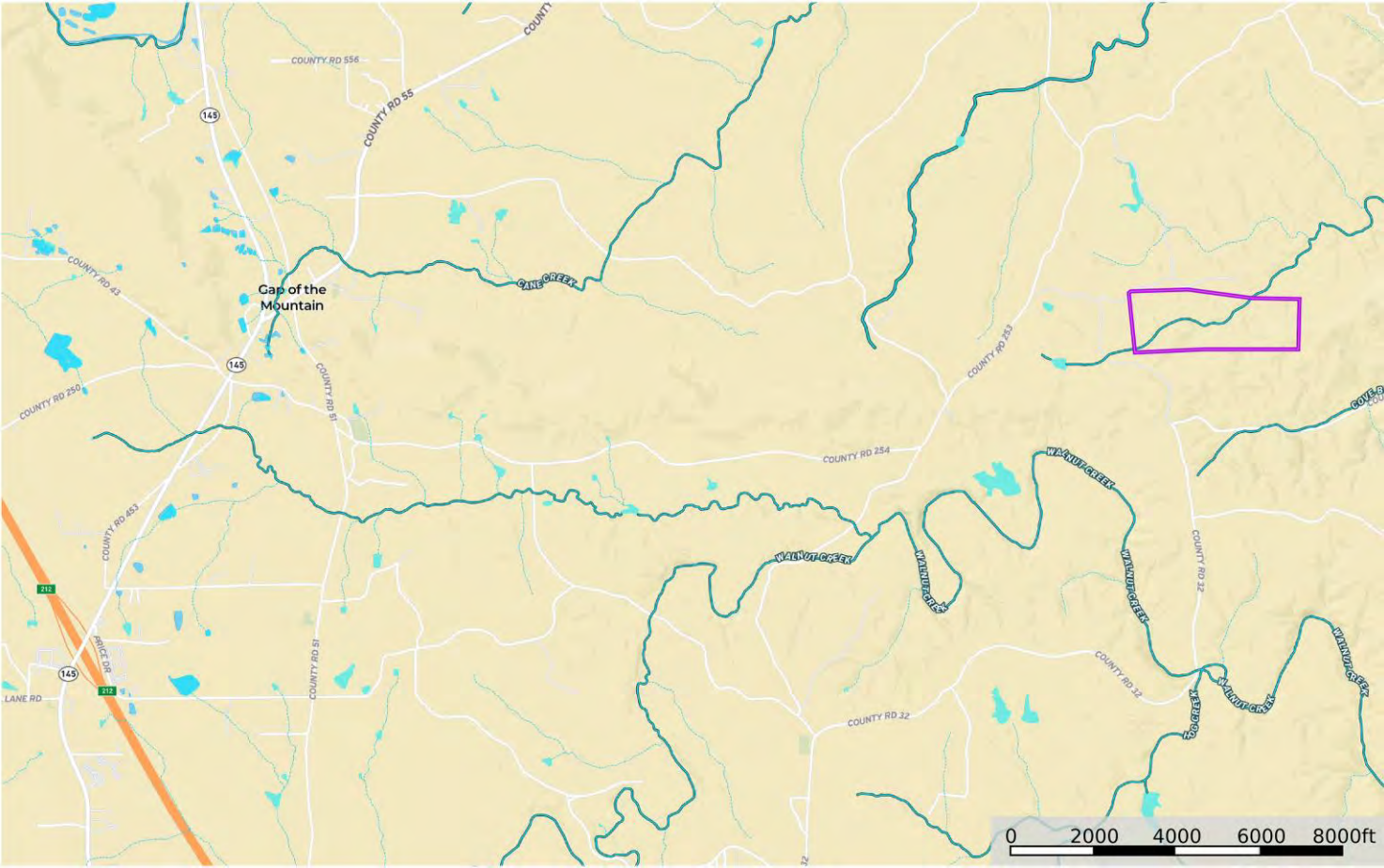
From Exit 212, take AL Hwy 145 north for ¼ mile. Take a right on Co Rd 448 and go 1.0 mile. Take a left on Co Rd 51 and go 0.7 mile. Take a right on Co Rd 254 and go 2.8 miles. Continue straight on Co Rd 251 for ¼ mile. Take a left on Co Rd 253 and go 0.6 mile. Take a right on Co Rd 32 and go 0.3 miles. Take a left on Co Rd 257 and go 0.2 miles to the northwest corner of the property. The property fronts on Co Rd 257 (this county road has no signage) for about 50 feet. Look for the pink flags & the Cyprus Partners sign. You are welcome to look on your own (download the brochure from the web site to print out the maps and take with you), or call the agent, Tom Brickman, 205-936-2160, to arrange a tour or for more info.

IMPORTANT NOTICE

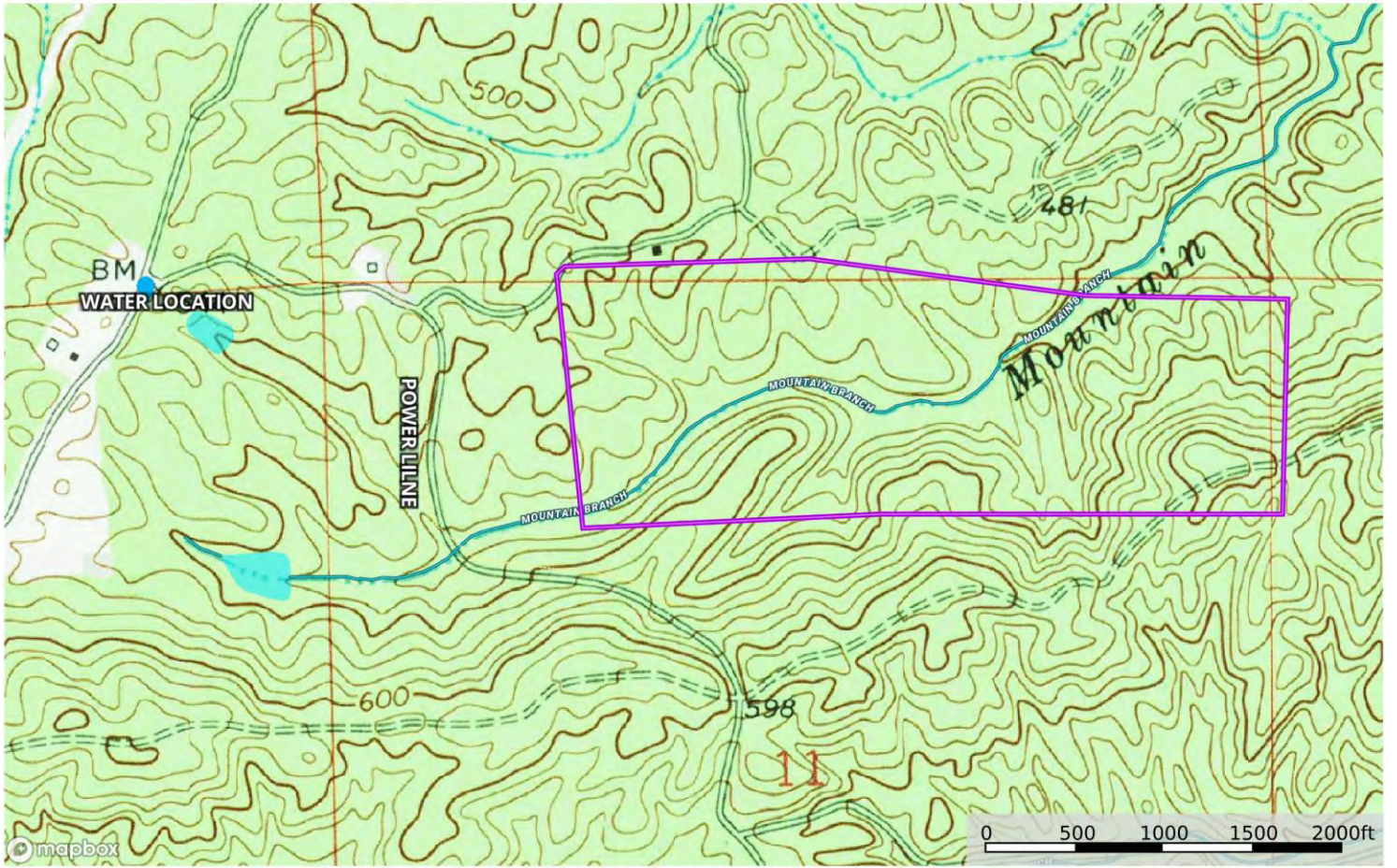
Investment in rural land carries risk and this offering is made with conditions.

This property is subject to prior sale, price change and withdrawal from the market without notice. Prospective buyers should understand and independently verify risk factors before making a purchase decision. Neither Cyprus Partners and our agents nor the property owner make any representation or warranty as to completeness or accuracy of maps and other information provided here. No representation or warranty is made about this property, express or implied, as to any above-ground or below-ground condition, boundary location, fitness for any particular use, fair market value, access, acres, zoning, mineral ownership, condition of title, or the effects on property use from the actions of any government agency.

Location Map



Topographic Map



Aerial Photo

